

ELECTRICAL SYMBOLS

- ⊕ SINGLE POLE SWITCH
- ⊕ 3-WAY SWITCH
- ⊕ DUPLEX CONV. OUTLET 15" AFF (U.N.O.)
- ⊕ DUPLEX CONV. OUTLET 36" AFF
- ⊕ WATERPROOF OUTLET
- ⊕ GROUND FAULT OUTLET
- ⊕ ARC FAULT OUTLET
- ⊕ DIRECT CONNECT TO APPLIANCE
- ⊕ WALL FIXTURE
- ⊕ RECESSED DOWNLIGHT
- ⊕ DOUBLE WALL FLOOD LIGHTS
- ⊕ EXHAUST FAN
- ⊕ CEILING FAN AND LIGHT
- ⊕ MOTOR
- ⊕ SMOKE DETECTOR (110 V.)
- ⊕ CARBON MONOXIDE DETECTOR

LEGEND

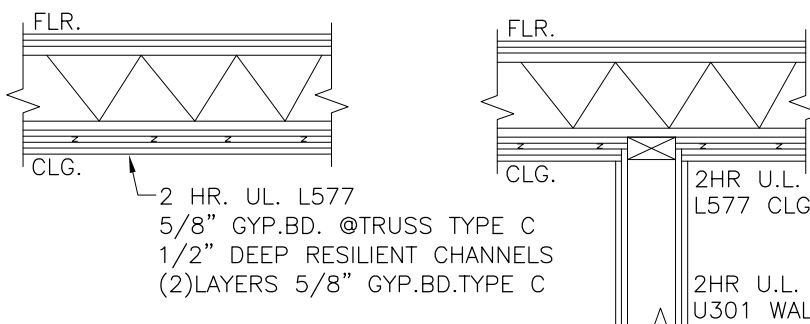
- SURFACE MOUNT MEDICINE CABINET W/STRIP LIGHT ABOVE
- ⊕ GFI GROUND FAULT INTERRUPTER
- ⊕ AFI ARC FAULT INTERRUPTER
- ⊕ OVERHEAD LIGHT FIXTURE
- ⊕ LED LIGHTS IN COMMON AREA
- N.F.W.H. - NON FREEZE WALL HYDRANT
- U.N.O. - UNLESS NOTED OTHERWISE
- V.I.F. - VERIFY IN FIELD

WALL SYMBOLS

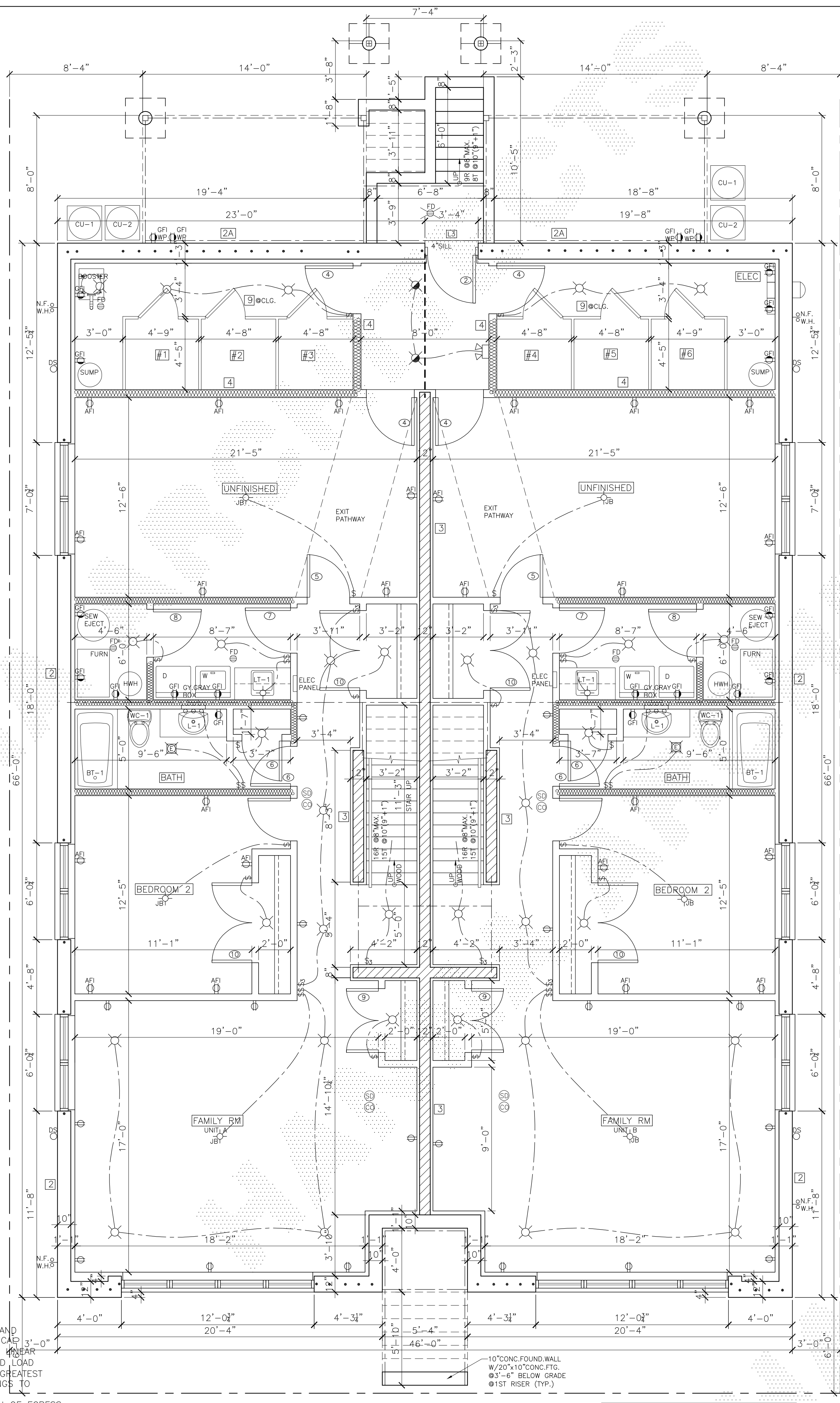
- ▬ 2x4 WOOD WALL STUDS @16" O.C. W/ 5/8" GYPSUM BOARD BOTH SIDES (UNLESS NOTED OTHERWISE) TYPE 'X' GYP.BD. AT FIRE RATED CONSTR.
 - ▬ CONCRETE BLOCK
 - ▬ FACE BRICK W/CONCRETE BLOCK
 - ▬ SOLID CONCRETE BLOCK
- * COMPLY WITH UNDERWRITERS LABORATORIES TEST DATA FIRE RATED DESIGNS FOR ALL SPECIFIED FIRE RATED CONSTRUCTION (TYP.).

WALL & PARTITION SCHEDULE

- FIRE RATED ASSEMBLY SCHEDULE:
- 1 3 HOUR U.L. U904 BEARING MASONRY WALL 8"x8"x16" CONCRETE BLOCK CLASS C-3
 - 2 3 HOUR U.L. U902 BEARING MASONRY WALL 6"x8"x16" CMU W/4" FACE BRICK CLASS D-2
 - 2A 3 HOUR U.L. U902 BEARING MASONRY WALL 8"x8"x16" CMU W/4" FACE BRICK CLASS D-2
 - 3 2 HOUR U.L. U905 BEARING MASONRY WALL 8"x8"x16" CONCRETE BLOCK CLASS D-2
 - 4 2 HOUR U.L. U301 NON-LOAD BEARING STUD WALL 2x4's @16" O.C. W/(2) LAYERS 5/8" GYP.BD. EA.FACE
 - 5 1 HOUR U.L. U305 NON-LOAD BEARING STUD WALL 2x4's @16" O.C. W/(1) LAYER 5/8" GYP.BD. EA.FACE
 - 7 1 HOUR U.L. L521 FLOOR RATED ASSEMBLY (SEE WALL SECTION)
 - 8 2 HOUR U.L. U415 CEILING JOIST ASSEMBLY
 - 8 2" DEEP 3 RUNNERS W/3/8" STL STUDS @16" O.C. W/(2) LAYERS 5/8" GYP.BD. EACH FACE
 - 9 2 HOUR U.L. L577 TRUSS CEILING ASSEMBLY
 - 9 8" GYP.BD. TYPE C W/1/2" DEEP RESILIENT CHANNELS W/2 LAYERS 5/8" GYP.BD. TYPE C (SEE DETAIL THIS SHEET)
 - 3 HOUR U.L. U419 LOAD BEARING STEEL STUD WALL
 - 10 3/8" 16 GA. STL STUDS @16" O.C. W/(3) 1/2" GYP.BD. EA.FACE W/8" HORIZONTAL FIBER CEMENT SIDING
 - 2 HOUR U.L. U419 NON-LOAD BEARING STEEL STUD WALL
 - 11 3/8" 16 GA. STL STUDS @16" O.C. W/(2) 1/2" GYP.BD. EA.FACE W/8" HORIZONTAL FIBER CEMENT SIDING
- NOTE: USE TYPE 'C' DRYWALL FOR FIRE RATED ASSEMBLIES

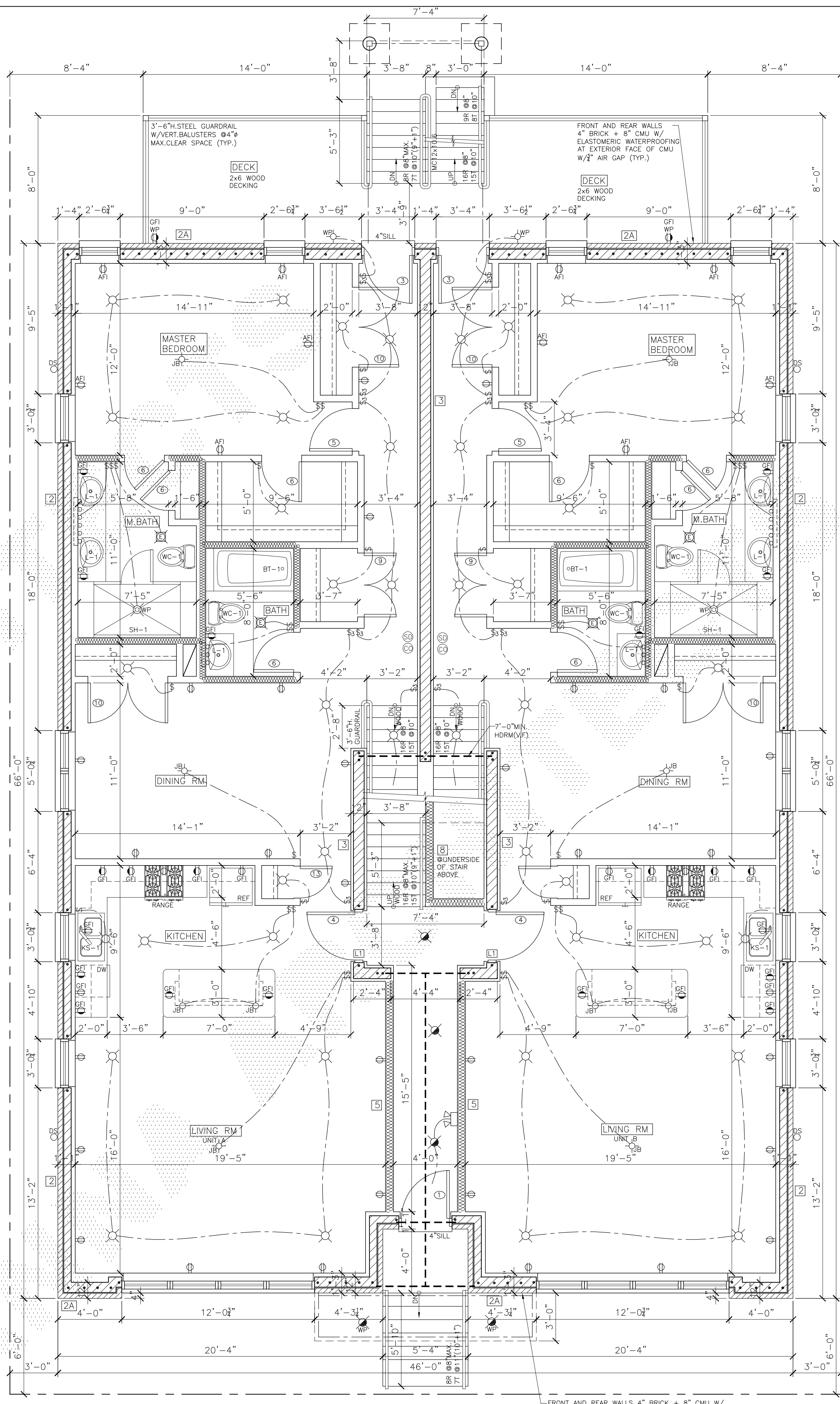


- NOTES:
1. STAIRWAY, PORCH, DECK AND BALCONY RAILING, BOTH INTERIOR AND EXTERIOR SHALL BE DESIGNED TO RESIST A SIMULTANEOUS VERTICAL AND HORIZONTAL THRUST OF 50 LBS./FT. (POUNDS-FORCE, PER LINEAR FOOT) APPLIED AT THE TOP OF THE RAILING OR A CONCENTRATED LOAD OF 200 LBS./FT. IN ANY DIRECTION WHICHEVER PRODUCES THE GREATEST STRESS. SHALL SUBMIT SEALED CALCULATIONS AND SHOP DRAWINGS TO THE ARCHITECT FOR REVIEW PRIOR TO FABRICATION (TYP.).
 2. ALL REQUIRED EXIT DOORS SHALL BE KEYLESS IN THE DIRECTION OF EGRESS.
 3. ALL MATERIALS AT STAIRWELLS FOR INTERIOR WALL AND CEILING FINISH SHALL BE CLASS I FLAME SPREAD RATING.
 4. VERIFY ALL EQUIPMENT DIMENSIONS BEFORE CONSTRUCTING WALL PARTITIONS.
 5. STRUCTURE SHOWN AT EACH FLOOR IS FLOOR STRUCTURE ABOVE.
 6. VERIFY ALL DIMENSIONS IN THE FIELD.
 7. USE DUROCK TILE BACKER BOARD AT ALL SHOWERS & WHIRLPOOLS.
 8. ALL COMMON STAIRS TO BE NON-COMBUSTIBLE CONC.FILLED METAL PAN.
 9. CAULK ALL EXTERIOR PENETRATIONS.



BASEMENT FLOOR PLAN
SCALE: 1/4" = 1'-0"

NOTE: BASEMENT WALLS AND SLAB SHALL BE MADE IMPERVIOUS TO MOISTURE/LEAKAGE OF UNDERGROUND AND SURFACE RUN-OFF WATER AND PROTECTED AGAINST DAMPNESS (TYP.)



FIRST FLOOR PLAN
SCALE: 1/4" = 1'-0"

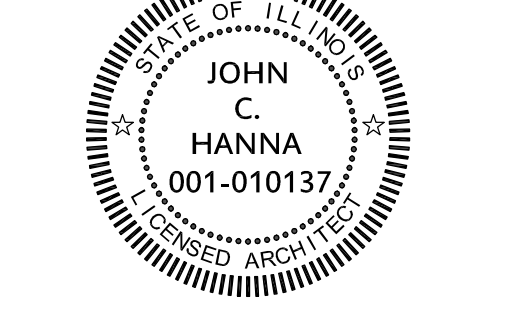


(312) 750-1800
180 W. WASHINGTON
CHICAGO, ILLINOIS 60602
FAX (312) 750-1801

PROFESSIONAL DESIGN FIRM
ARCHITECT CORPORATION
LICENSE NUMBER 184 - 001485

WARNING:
This plan Protected under Copyright
Laws. Original mylar drawing on file
at the Architects' office can be
reproduced with the Architects
permission only. If someone wishes
to copy this plan; contact John Hanna
(312) 750-1800

- ISSUED FOR REVIEW
- ISSUED FOR REVIEW
- ISSUED FOR PERMIT DECEMBER 11, 2015
- ISSUED FOR BID
- ISSUED FOR CONSTN



PROJECT NAME & ADDRESS
2528 W. ADDISON ST
6 UNIT 3 STORY
MAS. APART BLDG.
W/BASEMENT
CHICAGO, ILLINOIS

SHEET TITLE
BASEMENT AND
FIRST FLOOR
PLAN

FILENAME

SHEET NUMBER
A-2