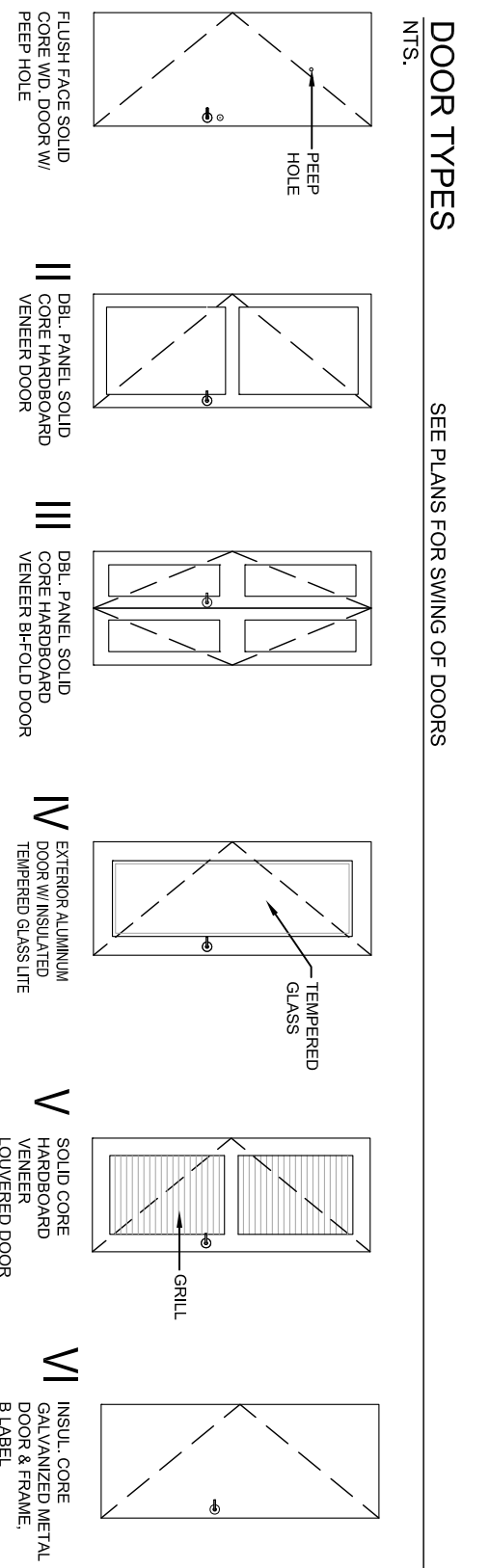


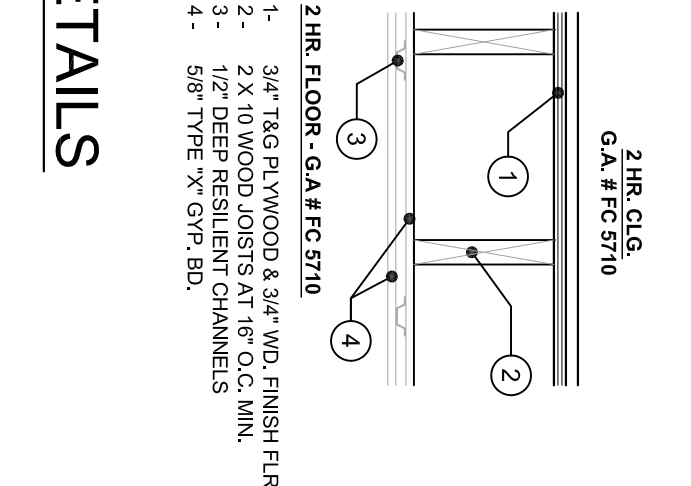
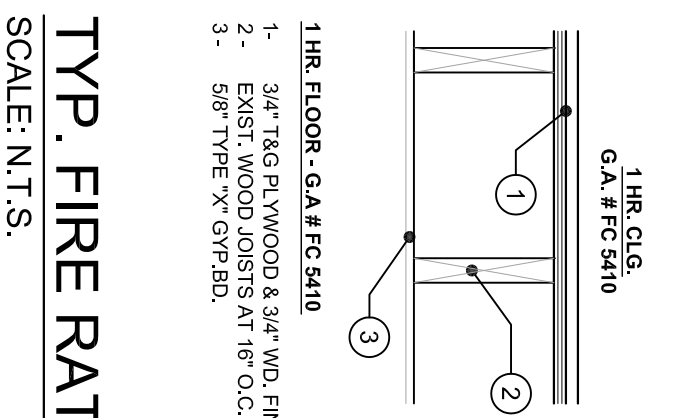
| NATURAL LIGHT & VENTILATION |                       |                    |                   |                    |                   |               |
|-----------------------------|-----------------------|--------------------|-------------------|--------------------|-------------------|---------------|
| UNIT                        | USE OF SPACE          | FLOOR AREA         | ORDNANCE          | ACTUAL             | WINDOW TAG        |               |
|                             |                       | SO. FT. GLASS AREA | SO. FT. VENT AREA | SO. FT. GLASS AREA | SO. FT. VENT AREA |               |
| <b>3509 UNIT #G</b>         |                       |                    |                   |                    |                   |               |
|                             | KITCHEN/LIVING/DINING | 323                | 25.8              | 12.9               | 26.0              | 27.4 (9B & H) |
|                             | BEDROOM #1            | 110                | 8.8               | 4.4                | 8.9               | 9.5 F         |
|                             | BEDROOM #2 - W.I.C.   | 95                 | 7.6               | 3.8                | 7.6               | 8.0 D         |
|                             | BEDROOM #3            | 132                | 10.6              | 5.3                | 11.2              | 16.7 F, A, J  |
|                             | BEDROOM #3 - W.I.C.   | 25                 | N.R.              | N.R.               | -                 | -             |
|                             | BATH #1               | 40                 | N.R.              | MECH.              | -                 | MECH.         |
|                             | BATH #2               | 49                 | N.R.              | MECH.              | -                 | MECH.         |
|                             | CORRIDOR              | 132                | N.R.              | N.R.               | -                 | -             |
|                             | <b>TOTAL</b>          | <b>749</b>         |                   |                    |                   |               |
| <b>3507 UNIT #G</b>         |                       |                    |                   |                    |                   |               |
|                             | KITCHEN/LIVING/DINING | 290                | 23.2              | 11.6               | 26.0              | 27.4 (9B & H) |
|                             | BEDROOM #1            | 110                | 8.8               | 4.4                | 8.9               | 9.5 F         |
|                             | BEDROOM #2            | 95                 | 7.6               | 3.8                | 7.6               | 8.0 D         |
|                             | BEDROOM #3            | 132                | 10.6              | 5.3                | 11.2              | 16.7 F, A, J  |
|                             | BEDROOM #3 - W.I.C.   | 25                 | N.R.              | N.R.               | -                 | -             |
|                             | BATH #1               | 40                 | N.R.              | MECH.              | -                 | MECH.         |
|                             | BATH #2               | 49                 | N.R.              | MECH.              | -                 | MECH.         |
|                             | CORRIDOR              | 133                | N.R.              | N.R.               | -                 | -             |
|                             | <b>TOTAL</b>          | <b>904</b>         |                   |                    |                   |               |

| WINDOW SCHEDULE |                |           |         |                        |                        |         |
|-----------------|----------------|-----------|---------|------------------------|------------------------|---------|
| MARK            | UNIT SIZE      | TYPE      | MODEL # | NATURAL LIGHT (SQ.FT.) | NATURAL VENT. (SQ.FT.) | REMARKS |
|                 |                |           |         |                        |                        |         |
| GLASS TYPE      |                |           |         |                        |                        |         |
|                 |                |           |         | CLEAR                  |                        |         |
|                 |                |           |         | FROSTED                |                        |         |
|                 |                |           |         | OPAQUE                 |                        |         |
|                 |                |           |         | TEMPERED               |                        |         |
| A               | 2'-1" X 20'    | DBL. HING |         | 4.4                    | 2.3                    |         |
| B               | 2'-4" X 29'    | CASEMENT  |         | 5.9                    | 6.2                    |         |
| C               | 3'-0" X 6'-0"  | DBL. HING |         | 15.3                   | 16.2                   |         |
| D               | 2'-10" X 3'-2" | CASEMENT  |         | 7.6                    | 8.0                    |         |
| E               | 2'-10" X 4'-5" | DBL. HING |         | 10.8                   | 5.6                    |         |
| F               | 3'-4" X 3'-2"  | CASEMENT  |         | 8.9                    | 9.5                    |         |
| G               | 3'-4" X 4'-5"  | DBL. HING |         | 12.5                   | 6.6                    |         |
| H               | 3'-7" X 29'    | CASEMENT  |         | 8.3                    | 8.8                    |         |
| I               | 3'-7" X 4'-5"  | DBL. HING |         | 13.7                   | 7.2                    |         |
| J               | 3'-1" X 3'-2"  | CASEMENT  |         | 8.3                    | 7.2                    |         |

| DOOR SCHEDULE |          |       |         |       |      |          |          |            |       |         |         |         |       |                |  |
|---------------|----------|-------|---------|-------|------|----------|----------|------------|-------|---------|---------|---------|-------|----------------|--|
| DOOR NO.      | DOOR     |       |         | FRAME |      |          | HARDWARE |            |       | REMARKS |         |         |       |                |  |
|               | DOOR NO. | WIDTH | HEIGHT  | THICK | TYPE | MATERIAL | FINISH   | U.L. LABEL | ENTRY |         | PASSAGE | PRIVACY | DUMMY | KNURLED HANDLE | AUTO CLOSURE                               |
| 1             | 2'-0"    | 6'-8" | 1'-3/8" | II    | WD   | PNT      | WD       | PNT        |       |         |         |         |       |                |  |
| 2             | 2'-0"    | 6'-8" | 1'-3/8" | II    | WD   | PNT      | WD       | PNT        |       |         |         |         |       |                |  |
| 3             | 2'-4"    | 6'-8" | 1'-3/8" | II    | WD   | PNT      | WD       | PNT        |       |         |         |         |       |                |  |
| 4             | 2'-0"    | 6'-8" | 1'-3/8" | II    | WD   | PNT      | WD       | PNT        |       |         |         |         |       |                |  |
| 5             | 2'-10"   | 6'-8" | 1'-3/8" | V     | WD   | PNT      | WD       | PNT        |       |         |         |         |       |                | PROVIDE TRANSOM UNIT ABOVE UNIT ENTRY DOOR |
| 6             | 2'-10"   | 6'-8" | 1'-3/8" | IV    | ALX. | PNT      | ALX.     | PNT        |       |         |         |         |       |                | PROVIDE TRANSOM UNIT ABOVE UNIT ENTRY DOOR |
| 7             | 3'-0"    | 6'-8" | 1'-3/8" | I     | WD   | PNT      | WD       | PNT        |       |         |         |         |       |                |  |
| 8             | 3'-0"    | 6'-8" | 1'-3/8" | VI    | MTL  | PNT      | MTL      | PNT        | B     |         |         |         |       |                |  |
| 9             |          |       |         |       |      |          |          |            |       |         |         |         |       |                | NOT USED                                   |
| 10            | 3'-2"    | 6'-8" | 1'-3/8" | VII   | WD   | PNT      | WD       | PNT        |       |         |         |         |       |                | EXT. ENTRY, PROVIDE SIDE LIGHT             |
| 11            | 5'-0"    | 6'-8" | 1'-3/8" | III   | WD   | PNT      | WD       | PNT        |       |         |         |         |       |                |  |
| 12            | 6'-0"    | 6'-8" | 1'-3/8" | III   | WD   | PNT      | WD       | PNT        |       |         |         |         |       |                |  |

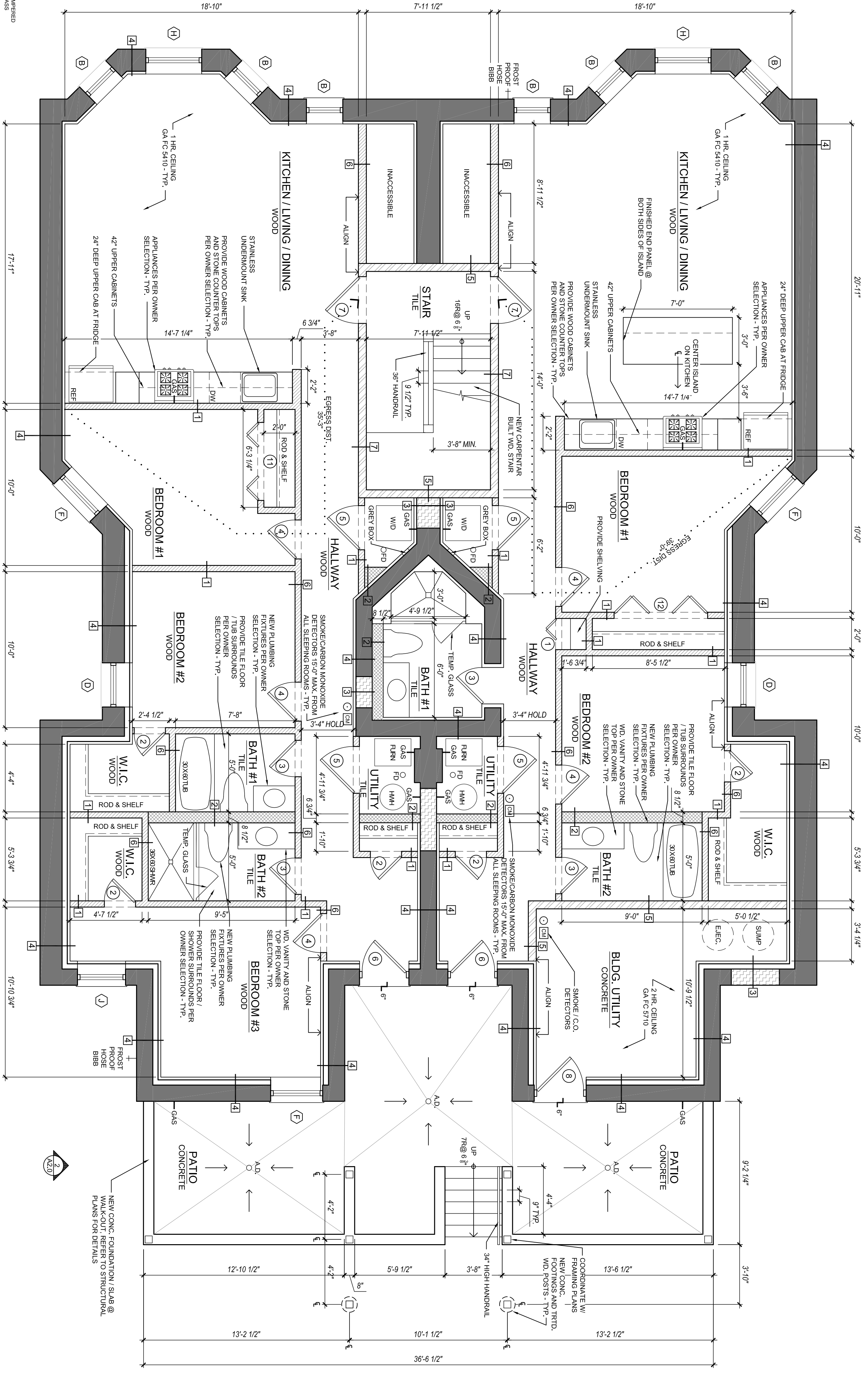


- DOOR NOTES**
- ALL DOORS USED IN CONNECTION W/ EXITS SHALL BE 90 MINUTE RATED AS TO BE READILY OPENED WITHOUT A KEY IN THE FIELD.
  - VERIFY ALL DOOR WIDTHS & HEIGHTS IN FIELD PRIOR TO ORDERING.
  - PROVIDE CLEARANCE TO ALL DOORS.
  - ALL HINGES & HANDLES TO BE SCHEDULE 40.
  - U.N.O. W/ 028 FINISH.
  - REVIEWED BY ARCHITECT PRIOR TO PURCHASE BY CONTRACTOR U.N.O.
  - PROVIDE FIBER HOLE AT ALL UNIT ENTRY DOORS.
  - ALL DOOR FRAMES MUST BE FIRE LISTED TO MATCH THE FIRE RATING OF THE DOOR.

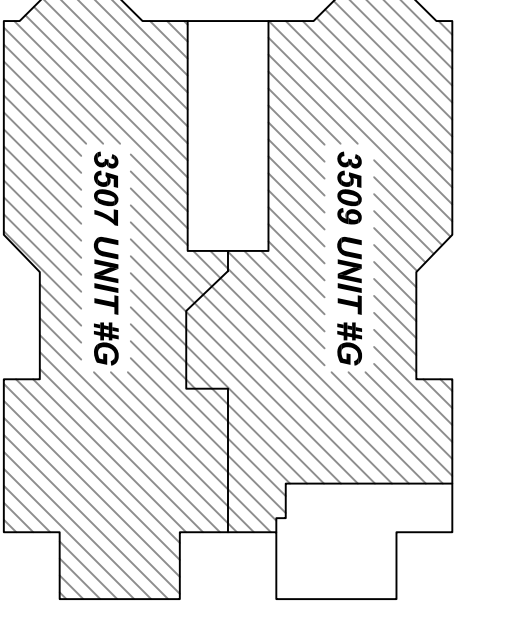


- GENERAL NOTES:**
- CONTRACTOR SHALL VERIFY ALL DIMENSIONS AND CONDITIONS OF ALL DISCREPANCIES, OMISSIONS AND/OR CONFLICTS PRIOR TO PROCEEDING WITH WORK.
  - ALL WORK SHALL CONFORM TO LATEST EDITION OF "CITY OF CHICAGO" BUILDING AND ZONING CODES.
  - DO NOT SCALE DRAWINGS.
  - DO NOT RUN ANY PLUMBING ON EXTERIOR WALLS.
  - ALL DIMENSIONS ARE TO FINISH FACE UNLESS NOTED OTHERWISE.
  - PROVIDE JANTS BETWEEN ALL WINDOWS AND DOORS AND ADJACENT DDB'S, SWIMMING POOLS.
  - PROVIDE WAPOR BARRIER FACED BATT INSULATION AT ALL EXTERIOR WALLS, DEMISING WALLS AND BETWEEN GARAGE AND LIVING SPACES.

- ALL INTERIOR FINISHES TO BE CLASS I OR BETTER W/ FLAME SPREAD 0 - 25 - U.N.O.
- ALL OPENINGS BETWEEN PIPES, DUCTS AND FUELS WHICH ARE NOT TO BE PROTECTED SHALL BE PROTECTED WITH NON-COMBUSTIBLE MATERIALS HELD IN PLACE TO PREVENT THE PASSAGE OF FIRE.
- PROVIDE FULL COMBUSTIBLE BEAM AT ALL FURNACE LOCATIONS WHERE NO 1/2\"/>

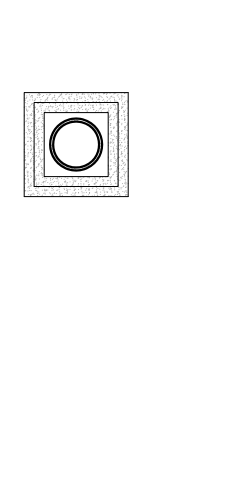


**BASEMENT FLOOR PLAN**  
SCALE: 1/4" = 1'-0"

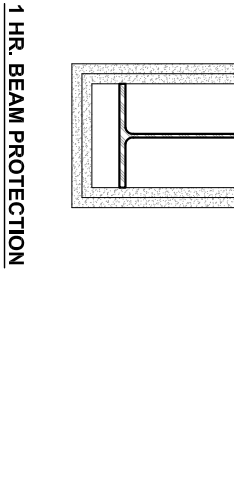


**KEY PLAN**  
N.T.S.

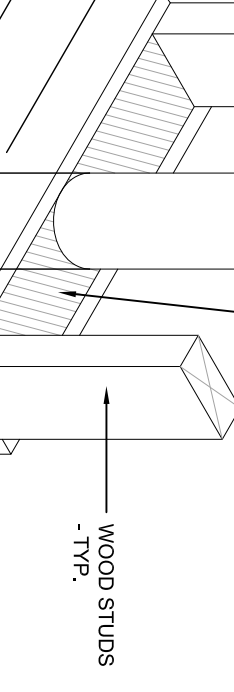
**TYP. COL. ENCLOSURES**  
SCALE: 1" = 1'-0"



**TYP. BEAM ENCLOSURE**  
SCALE: 1" = 1'-0"



**FIRESTOPPING DETAIL**  
SCALE: 1 1/2" = 1'-0"



**A1.1**

BASEMENT PLAN, SCHEDULES, & NOTES

12/18/20  
6 BRILL

**WILTON FLATS**  
3507-09 N. WILTON AVE. CHICAGO, IL 60657

**SP Engineers**  
Consulting Structural Engineers  
134 N. LaSalle, Suite 1830 Chicago, IL 60602  
Phone: 312.323.2800  
Fax: 312.323.2820

**SPACE**  
ARCHITECTS + PLANNERS  
689 N. MILWAUKEE AVE. CHICAGO, IL 60642 312.829.6666